

Health and Wellbeing Board
13 March 2014

Self Assessment Frameworks for Autism and Learning Disabilities

Purpose of the report:

1. For the Health and Wellbeing Board to receive the local Joint Health and Social Care Self Assessment Framework outcomes in order to inform strategy and the JSNA.
2. For the Health and Wellbeing Board to oversee and monitor the outcomes.

Introduction:

1. **What is the Partnership Board Self Assessment?**

The Government have asked us to check how well services are working for people with learning disabilities and their families.



The Joint Health and Social Care Learning Disability Self Assessment Framework is a return that Partnership Boards across the country are asked to complete. In Surrey there were 3612 people receiving social care packages of support in 2012-13. Results are collated by Improving Health and Lives Learning Disabilities Observatory. (<https://www.improvinghealthandlives.org.uk/>)

What is the Self Assessment Framework about?

2.



The questions were about 3 subjects

- Health
- Social care
- Including people

The Assessment Framework consisted of

- a section that requested figures in relation to people with learning disabilities. Figures requested included break down of the age of people with learning disabilities, how many were eligible for range of health screening, had an annual health checks, attended out-patients, received in-patient care; received social care assessment; were in employment and range of accommodation options.
- a section in which the Partnership Board RAG rated its services and provided evidence for the rating. The areas covered were: Health, Social Care and Inclusion.

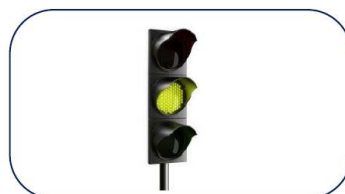
As well as gathering the figures from across health and social care, the Self Assessment form was made accessible, questionnaires were produced and sessions held across Surrey to RAG rate services

3. **We had to rate how we were doing.**



Red means

We are not doing well and need to improve.



Amber means

We are doing some things well, but there is still a lot of work to do.



Green means

We are doing really well.

4. We were **red** on 6 ratings

The sections we rated ourselves **red** were on the number of people



with learning disabilities that are on the GP register



that had a health screening



that had a annual health check



that had health action plans



that had regular care review

- People with learning disabilities that are on GP register
Although we have QOF registers we were not able to validate them and get information required.
- People with learning disabilities are accessing health prevention, health screening and health promotion in following areas: Obesity, Diabetes, Cardio Vascular disease and Epilepsy. We could not provide figures or compare them against general population as this information is not currently captured via register or other mechanisms within public health.
- People with learning disabilities have had an annual health check.
1778 people out of 3612 people were agreed with GP's as eligible for annual health check. 1308 people received an annual health check
- People with learning disabilities have an annual health action plan.
Figures state that 3130 were eligible for a health action plan and 2970 individuals have a health action plan. However individuals are not clear on who is responsible for monitoring annual health checks and do not always relate to annual health check.
- People with learning disabilities have had regular care reviews.
Figures state that 3612 individuals were eligible for Social Care. 1650 people had an assessment or re assessment.
- Care Providers have contracts in place but not all have signed the newly issued contracts.

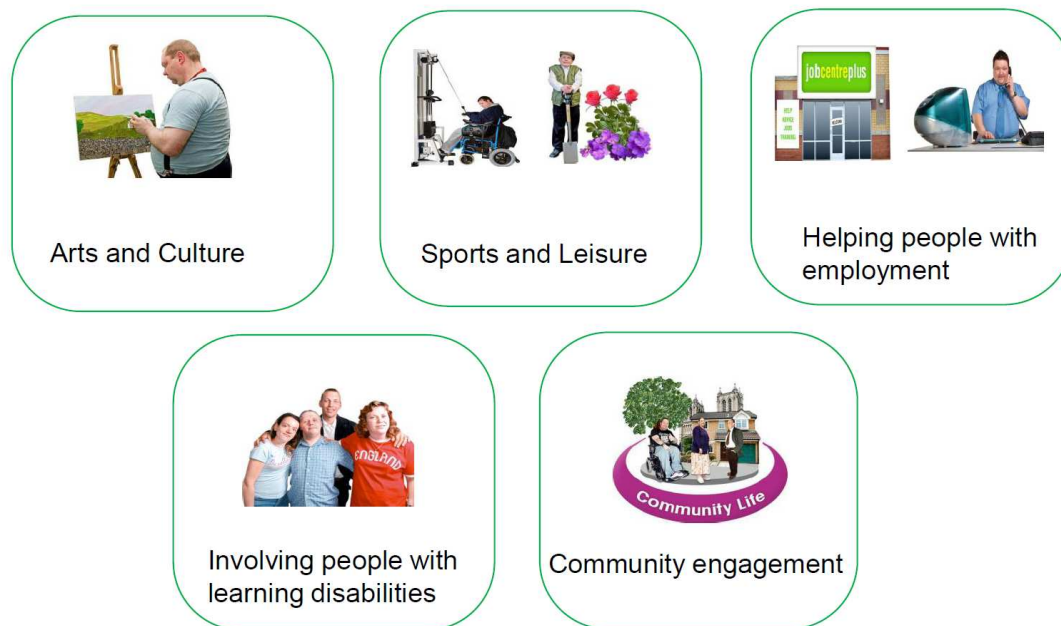
5. We were **amber** on 13 ratings

Surrey could provide some evidence and data on the following areas but felt more work could be done to be considered green:

- Flagging People with a learning disability when they access health services.
- Community Health Care- had good information on dentistry but not other community health services.
- Work Criminal Justice system- Surrey have a prison liaison nurse but need to do further work supporting people through the system.
- Safeguarding- Surrey have an action plan in place for Winterbourne but it needs to check actions are completed after investigations and ensure they have made a difference.
- Recruitment and Training is in place but could include more people with learning disabilities across all services.
- Dignity and Respect – Surrey can demonstrate training is provided but it was felt this target was difficult to measure as it was qualitative.
- Local Councils- We work within local councils but need to join this with health.
- Whistle Blowing and Complaints- there are some good policies but cannot guarantee these are always used.
- Mental Capacity Training – it is a target across services for everyone to receive training but the report required records over the past 3 years.
- Joint working – Surrey health and Social care are not integrated.
- Transport – Surrey has disabled bus passes and good use of transport but not all bus companies understand terms and condition regarding bus passes and prevent people using them.
- Community and Citizenship- Surrey need to continue to raise awareness on inclusion and value people with learning disability contribute to society.
- Support to Carers- Surrey had good engagement and access to support via assessments, short breaks and support groups but more could be done

6. We were **green** on the other 7 ratings.

The sections we rated ourselves **green** were on



Surrey could provide good evidence and data on the following areas:

- Work of Acute Liaison Nurses.
- All Foundation Trusts had met all monitoring standards.
- People with learning disabilities included in Arts and Culture.
- People with learning disabilities included in Sports and Leisure.
- People with learning disabilities are helped into Employment. There are 365 people in Surrey with a Learning Disability in Paid employment and 240 involved in Voluntary work.
- That Surrey were working well with people in Transition and are a 'Trail blazer' site for the single educational health and care plan.
- That Surrey are involving people with learning disabilities

Conclusions:

7. The Surrey Learning Disability Partnership Board is performing well in most areas. However there is a need to improve information and data collection relating to people with learning disabilities, and invest in developing the GP registers. We also need to work on completing individuals annual reviews.

Recommendations:

8. The Health and Well Being Board support the continued work of the Partnership Board and action plan going forward.

Next steps:



We are writing an action plan to list all the work we need to do and how we are going to do it.

Our action plan will say how we are going to make things better.



Next year there will be another Self Assessment Framework that will be completed and everybody can give their comments

Full responses of the Self Assessment Framework will be available on the Partnership Board website

Report contact: Jo Poynter, Senior Manager, Adult Social Care Commissioning – Learning Disabilities

Contact details:

Telephone: 07794 034773

Email: Jo.poynter@surreycc.gov.uk

Sources/background papers:

Public Health England: Joint Health and Social Care Assessment Framework

Annex 1- Self Assessment Framework



index.php - Final
061213v3 with sign o

Annex 2- SAF Action Plan



SAF Action plan
2013-14.pdf

Annex 3- SAF March Bulletin



SAF Bulletin March
2014 - draft b.pdf